

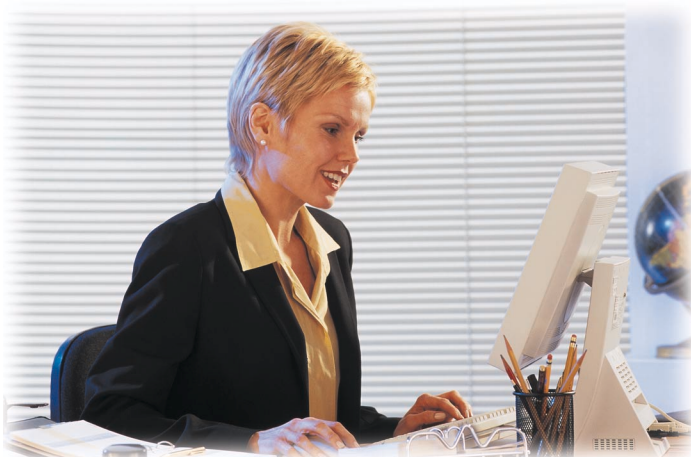
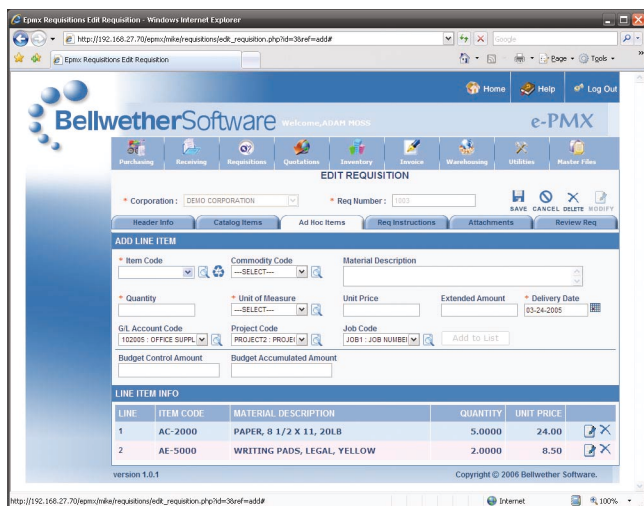
Since 1985, Bellwether Software has developed software that provides enterprise purchasing and e-procurement solutions for all types of businesses. The latest generation of our software, ePMX, is e-procurement Software offered as a Service (SaaS) and, additionally, offered as the traditional software model at your data center or a hosted data center of your choice.

Functionality is grouped around business processes, and ePMX allows other applications to exchange data in real time as they participate in these processes. ePMX is modular, so more modules can be added as a company's needs change.

Based on Service-Oriented Architecture (SOA), Bellwether's e-Series, or ePMX, is a complete web-based Purchasing Software suite that offers full features and functionality.

It has been built for the Web from the ground up – not just enhanced or altered (web-enabled) from the original product. This helps assure that our customers are receiving problem-free solutions that perform at optimal level.

ePMX offers economies of scale, a limitless number of concurrent users and on-time, real-time information accessed via a browser. You get improved security, reliability, availability, scalability and a service level agreement that guarantees a certain level of service anywhere in the world where there is a working Internet connection.



Requisitions

Eliminate paperwork and reduce requisition approval time.

- Select items from online catalogs or enter in free-form mode.
- Check budget balances while requisitioning.
- Streamline requisition approvals with multi-level e-mail approval routing.
- Use your current e-mail to route requisitions to appropriate personnel.
- Convert requisitions to POs or Request for Quotations with no rekeying.
- View requisition status online or in built-in status reports.



Request for Quotation (RFQ)

Determine best price and terms for an order.

- Create RFQs for selected vendors based on user-defined criteria, including commodity codes and previously-entered RFQs.
- Create RFQs from requisitions.
- Issue formal RFQs via custom forms, fax or e-mail.
- View vendor performance ratings prior to bid awards.
- Carry winning bid information forward to PO with no rekeying.
- View RFQ status online or in built-in status reports.

Phone: (502) 426-5463

Fax: (502) 423-8963



Purchasing

Know exactly what you buy and from whom you buy it.

- Create purchase orders from requisitions, RFQs, and previously-entered POs.
- Issue standard, blanket, and blanket release POs.
- Issue POs via custom forms, fax, or e-mail.
- Specify multiple delivery dates, jobs, projects, account codes, cost centers, departments, and ship-to locations for a single PO.
- Analyze historical PO data and current transactions online or in built-in management reports.

Receiving

Record receipts against POs.

- Auto-receive all items for a PO or enter each receipt by item.
- Enter multiple partial receipts.
- Optionally print receiving tickets to accompany received items.
- Track material receipts on open POs, past due POs and closed POs online or in built-in reports.

Accounts Payable Interface

Streamline invoice entry and eliminate double entry.

- Automate three-way match of invoice to PO and receipts.
- Auto-generate invoice data, based on previously entered POs and receipts.
- Optionally override system-generated invoice data during invoice entry.
- Pass approved invoices to accounts payable system for payment.



Inventory

Stay in control of on-order and on-hand inventory balances at multiple warehouse locations.

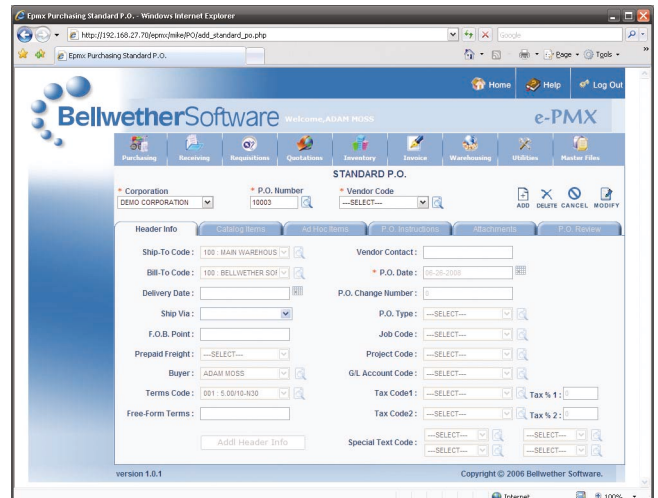
- Print bar code labels and scan inventory transactions.
- Print picking tickets and packing slips.
- Value inventory and inventory usage, using standard, average, and current costs.
- Support full statistical control, including reorder point, minimum and maximum stock levels, and reorder quantity.
- Generate automatic stock replenishment.
- Track inventory balances and inventory usage online or in built-in standard reports.



Purchasing Management eXtra's Complete End-to-End Procurement System

ePMX is a perfect solution for all kinds of businesses: small, medium, large, international and multinational. Bellwether Software has been helping purchasing departments automate their processes, increase their value to internal and external customers and deliver measurable contributions to company profits for more than two decades.

Contact us today for a free, no-obligation consultation.



Visit us on the internet: www.bellwethercorp.com

ePMX Technical Information

Salient (technical) features of the ePMX system are listed below:

- The application can be accessed from any operating system – Windows, Mac, Linux, etc.
- A high-speed Internet connection is needed.
- It has a full-function global dictionary for customization.
- The application uses a Thin Client – Internet Explorer, Firefox or Safari browsers.
- The client functions and business processing is performed out of HTML pages (incorporating JavaScript).
- Data and database transaction processing is performed out of stored procedures residing within the MySQL database and external queries (invoked from PHP).
- Information features like “Help” or “Contact Us” are out of static HTML pages.



About Bellwether...

Bellwether Software Corporation markets and supports its proprietary software, Purchasing Management eXtra (PMX). The company was established in 1985 and continues to exist to meet the demands of purchasing professionals in all types of businesses.

Bellwether’s client list is widely diversified, serving major corporations, small businesses, government, and many other types of institutions. Here is a partial list of customers who are using Bellwether’s PMX software.

Financial Institutions and Insurance

Community Bank N.A.
Empire Corporate, FCU
Federal Home Loan Bank
FiServ Insurance Solutions
Freemont Investment and Loan
Jackson National Life Insurance
National Penn Bank
Noridian Mutual Ins. Co.
Silicon Valley Bank
Southern Farm Bureau Life Ins.
Tower Federal Credit Union
West Bend Mutual Ins. Co.

Government

AZ Dept. of Veterans Affairs
Cameron Works, Inc.
Carthage Water and Electric
City of Dallas
City of Renton
L.A. Fire Dept.
Natl. Education Association
Natl. Center for Disability Services
Pinellas County Circuit Court
Progress Energy
Smithsonian
Tampa Sports Authority
TN Dept. of Health
U.S. Army CHIPPMEUR

Hospitals and Health Care

Addiction Research & Treatment
Amsterdam Nursing Home
DHR Public Health Laboratory
Extendicare Health Services
Flint River Hospital
Havenwood-Heritage Heights
Homer Memorial Hospital
Jay County Hospital
Kent County Mental Health Center
Litholink Corporation
Miller Memorial Blood Center
New Courtland, Inc.
NFO Research, Inc.
Pro Rehab, PC
St. Ann’s Community

Industrial and Manufacturing

ABC Packaging Machine Corp.
All Star Electric
Brintons U.S. Axminster, Inc.
F.L. Smithe Machine Co.
Folding Shutters Corp.
Formco Metal Products
Grand Isle Shipyard, Inc.
Herff Jones
ICI Paints
Industrial Alloy Fabricators
Jostens, Inc.
Nucor-Vulcraft Group

Omaha Steel Casting Co.
Premarc Corporation
Revere Cooper Products, Inc.
Seneca Sawmill Co.
Shepard Machinery Co.
Tyco Plastics
U.S. Marble
Xpedite
Winner Steel, Inc.

Not for Profit

Associated Catholic Charities
Goodwill Industries
Lutheran Immigration & Refuge
Sisters of Providence

Real Estate/Property Management

Allen Management
Budget Hotels
Fairfield Properties
Far West Management
First Realty Mgt. Corp.
Hotel Wolcott
Jurys Doyle Hotel
Sun River Resort
Welk Resort

Schools, Colleges & Universities

Eastern Idaho Tech College

Saint Francis University
Samuel Merritt College
Toronto French School

Service Companies

Affinity Group
Blackwell North America
Cable & Wireless
Colwell Systems
Detroit Newspapers
Fitzgeralds Casino
Kforce.com
Lemer, Sampson & Rothfuss
Mathematica Policy Research
Mazatzal Casino
Sarasota Bradenton Intl. Airport
Sierra Telephone
Summit Security Services
Syracuse Herald Journal
The Berry Company
The News Tribune

Wholesale/Retail

Avon Products, Inc.
Casual Male Corp.
Quick Check Food Stores
Smith & Noble, LLC
The Apparel Group